

# Regents Court

CENTRAL HARROGATE

UNION STREET (REAR OF PARLIAMENT STREET) HG1 2RL



A superb development of eight beautifully designed contemporary apartments occupying an excellent central location in the vibrant spa town of Harrogate



*...a better address*

[www.yorvikhomes.co.uk](http://www.yorvikhomes.co.uk)



## Yorvik Homes

Yorvik Homes has been building high quality houses and apartments throughout Yorkshire for over 15 years, combining craftsmanship with the latest technology to create stylish, low maintenance homes for today's busy lifestyle.

We are dedicated to ensuring the home you buy is the home you love to live in, and our friendly, professional staff will make buying and moving in to your new Yorvik home refreshingly simple and straightforward.

## Harrogate

Harrogate is a vibrant spa town with a wealth of attractions, making it a popular tourist destination and a wonderful place to live.

Its spa waters, Harlow Carr gardens and Betty's Tearooms have made it famous world wide.

The town enjoys excellent transport connections to the nearby cities of Ripon and Leeds, putting superb leisure and shopping amenities, including Harvey Nichols, within easy reach.



### FIRST FLOOR

#### Apartment 1

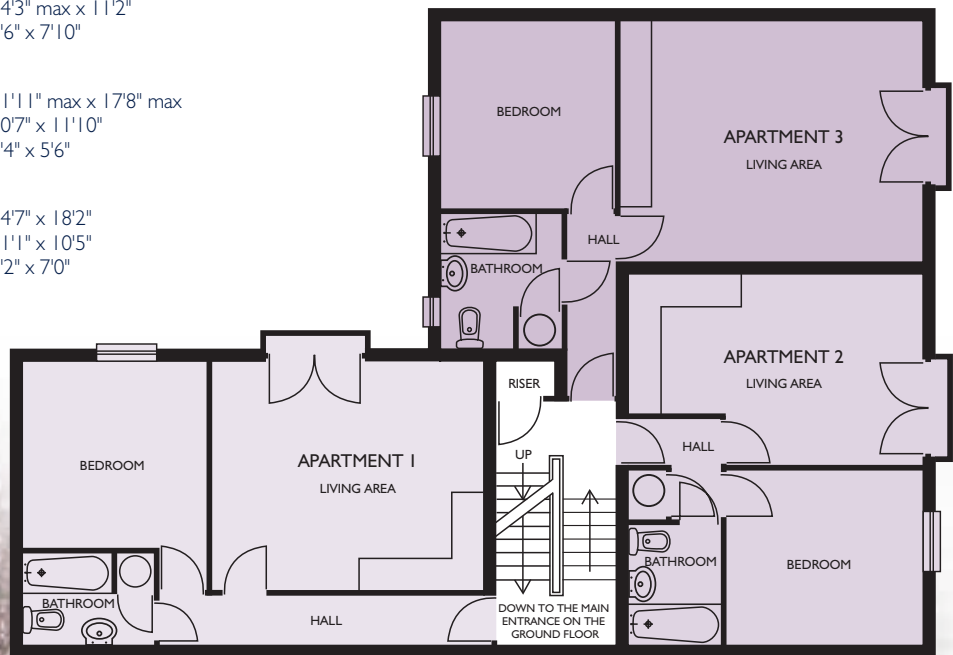
Living Area	4.35 x 5.06 max	14'3" x 16'7" max
Bedroom	4.35 max x 3.42	14'3" max x 11'2"
Bathroom	1.70 x 2.41	5'6" x 7'10"

#### Apartment 2

Living Area	3.64 max x 5.41 max	11'11" max x 17'8" max
Bedroom	3.23 x 3.61	10'7" x 11'10"
Bathroom	2.25 x 1.70	7'4" x 5'6"

#### Apartment 3

Living Area	4.45 x 5.55	14'7" x 18'2"
Bedroom	3.40 x 3.19	11'1" x 10'5"
Bathroom	2.50 x 2.15	8'2" x 7'0"



## SECOND FLOOR

### Apartment 4

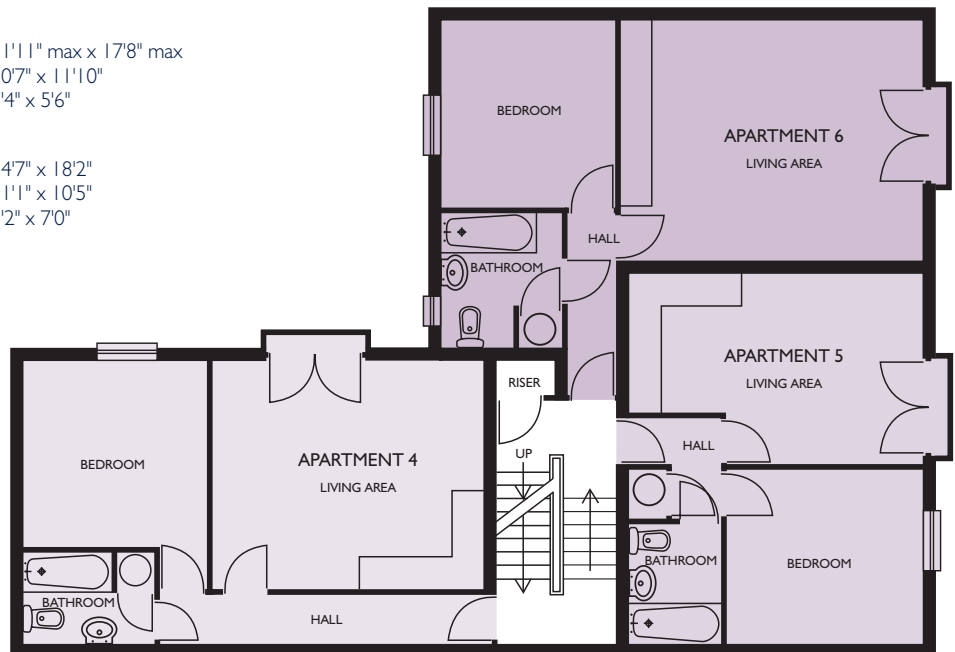
Living Area	4.35 x 5.06 max	14'3" x 16'7" max
Bedroom	4.35 max x 3.42	14'3" max x 11'2"
Bathroom	1.70 x 2.41	5'6" x 7'10"

### Apartment 5

Living Area	3.64 max x 5.41 max	11'11" max x 17'8" max
Bedroom	3.23 x 3.61	10'7" x 11'10"
Bathroom	2.25 x 1.70	7'4" x 5'6"

### Apartment 6

Living Area	4.45 x 5.55	14'7" x 18'2"
Bedroom	3.40 x 3.19	11'1" x 10'5"
Bathroom	2.50 x 2.15	8'2" x 7'0"



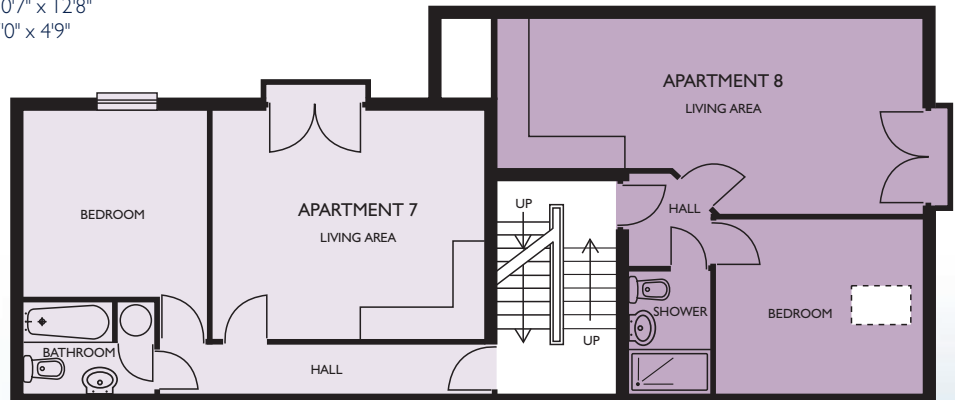
### Apartment 7

Living Area	4.35 x 5.06 max	14'3" x 16'7" max
Bedroom	4.35 max x 3.42	14'3" max x 11'2"
Bathroom	1.70 x 2.41	5'6" x 7'10"

### Apartment 8

Living Area	3.64 max x 7.70 max	11'11" max x 25'3" max
Bedroom	3.23 x 3.86	10'7" x 12'8"
Shower room	2.15 x 1.47	7'0" x 4'9"

## THIRD FLOOR



# Specification

## General/ External

Built in natural stone with high quality insulation.

## Kitchens

Choice of kitchen design, all with granite worktops and integrated appliances.

## Bathrooms

Villeroy & Boch sanitary ware and a choice of wall tiles from the Porcelanosa range.

## Decoration

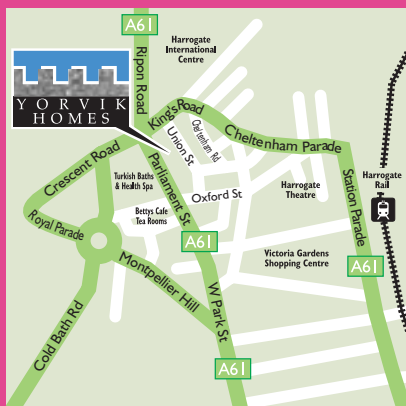
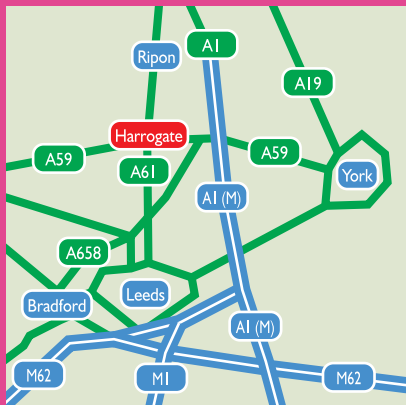
Skim plaster finish to all internal walls, with a base and two top coats of emulsion. Moulded skirting architraves painted gloss white.

## Heating

Electric heating to all properties.

## Electrical

TV and telephone points to the lounge and bedroom.



TO REGISTER YOUR INTEREST  
TELEPHONE: 01904 703458  
or email [info@yorvikhomes.co.uk](mailto:info@yorvikhomes.co.uk)



...a better address  
[www.yorvikhomes.co.uk](http://www.yorvikhomes.co.uk)

Whilst every effort has been made to ensure the information is correct, this brochure is designed specifically as a guide and Yorvik Homes reserve the right to amend the apartment layout and specification as necessary and without notice. All dimensions contained within this brochure are approximate and should not be used to calculate carpet sizes or spacings for appliances or furniture.